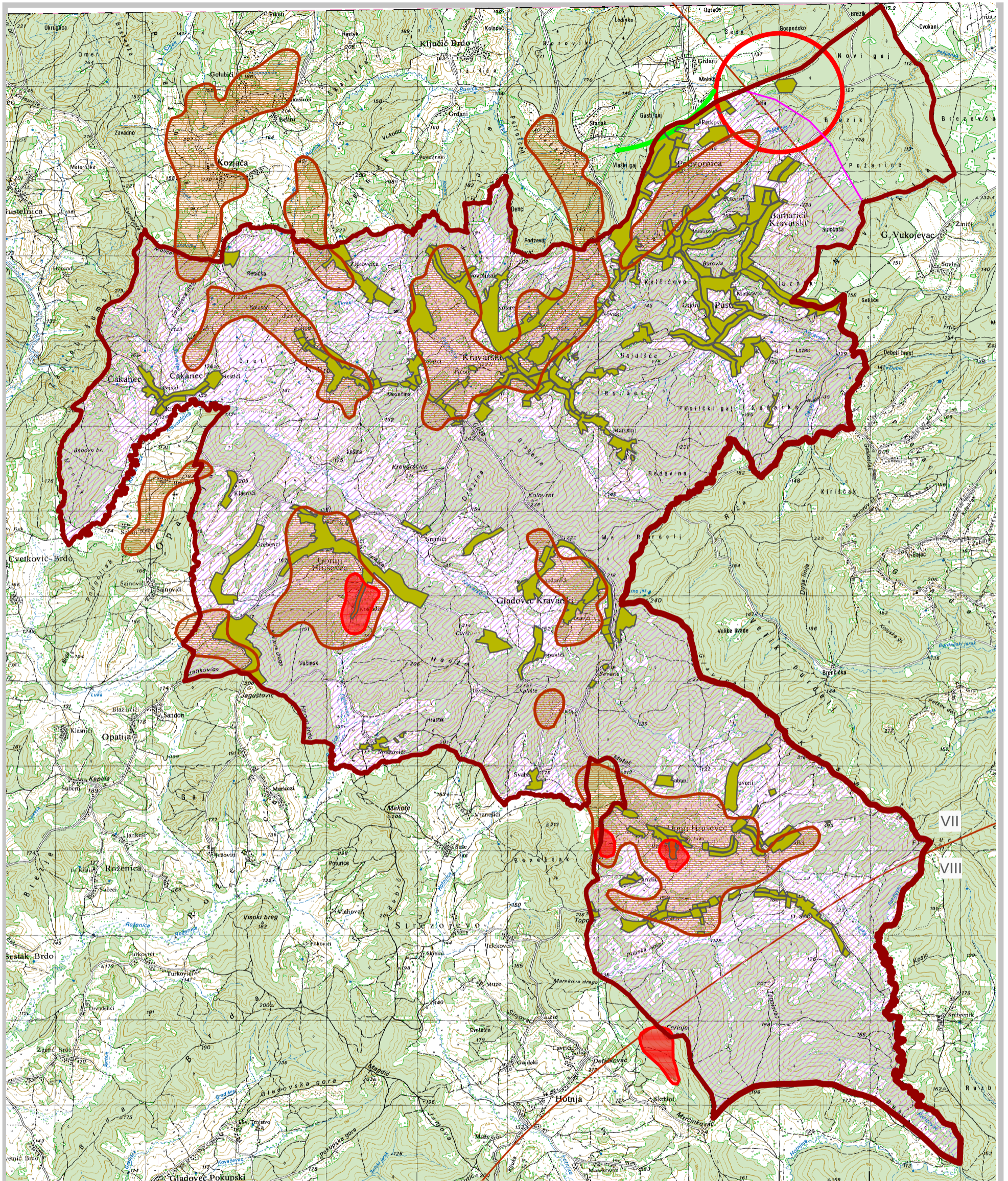










Zemljovid 4.6. PODRUČJE NESTABILNOG TLA S AKTIVNIM I MOGUĆIM KLIZIŠTIMA



SIMBOLI I OZNAKE

- | | | |
|--|---|---|
|  ZONA ZABRANE IZGRADNJE |  PODRUČJE POJACANE EROZIJE |  RAZGRANICENJE PODRUČJA NAJVEĆEG INTENZITETA POTRESA |
|  ZONA OGRANICENJA IZGRADNJE |  PODRUČJA NESTABILNOG TLA |  STUPANJ MCS LJESTVICE |
| |  AKTIVNO ILI MOGUĆE KLIZIŠTE |  SEIZMOTEKTONSKI AKTIVNO PODRUČJE |